

THE LOCAL CHURCH'S ROLE IN GLOBAL EVANGELISM



Supporting Missionaries



Local churches have a responsibility to train up their congregants to be obedient to Jesus' command to make disciples of all nations. Some of these congregants are led to bring the gospel to other countries or regions as missionaries. Local churches send these individuals out into the world to spread the gospel and then partner with these missionaries' ministries as financial partners as well as partnering in prayer.

Supporting Missional Ministries



Local churches can also partner with other Christian ministries whose mission is to bring the gospel to unbelievers around the world. Some churches partner with these ministries by offering them financial support. Others will offer support by encouraging their congregation to pray for the ministry. Still others will send short term missionary teams overseas to help the ministry spread the gospel.

Prayer



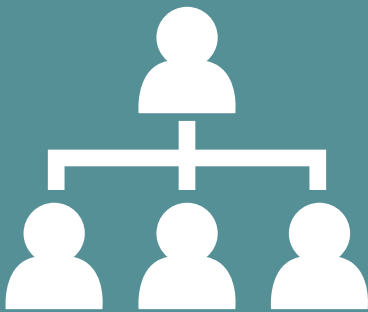
Ultimately, local churches need to be praying for the world to hear and respond positively to the gospel. Jesus said that He will not return until the whole world has heard the gospel (Matthew 24:14) and that we need to pray for people to go and spread the gospel (Matthew 9:38). Since God is ultimately the one who draws people to Himself (1 Corinthians 3:6), we need to ask Him to soften the hearts of unbelievers who hear the gospel.



THE LOCAL CHURCH'S ROLE IN LOCAL EVANGELISM

Create a Culture of Evangelism

Local churches should make evangelism a natural and essential component of their church culture. Churches should encourage their members to share the gospel as well as train them how to do so. Every Christian should be sharing the gospel with unbelieving coworkers, friends, neighbors, and anyone else they can.



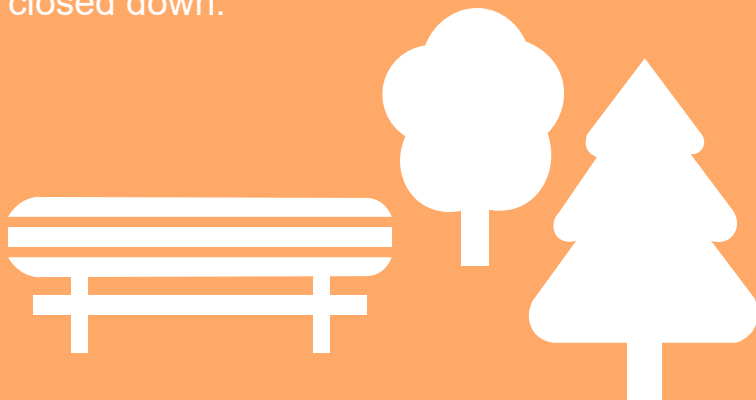
Make Disciples

The end goal should not be to get more people into church, the goal should be to make more disciples of Jesus who make disciples of Jesus. Evangelism without discipleship is ineffective. Jesus told us to make disciples of all nations, not just converts.



Connect with the Local Community

Churches should also have a presence in their local community. A question to ask yourself is, "if my church had to close down, would the people in this town even notice?" Many local churches have little to no impact on their surrounding community and most people living in the same town as these churches would not even notice if they closed down.



Create a Loving and Inclusive Community

Churches should provide a loving, inclusive, and welcoming community for anyone who wishes to be a part of it. Visitors of a church are sometimes nervous and hesitant to come in fear of being judged by the people at the church. Churches should take people as they are and work with them to grow in spiritual maturity.





THE LOCAL CHURCH'S ROLE IN THE GREAT COMMISSION



1

“Then Jesus came to them and said, “All authority in heaven and on earth has been given to me. Therefore

GO



2

...and

MAKE DISCIPLES

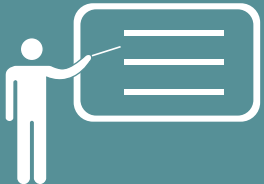
of all nations,



3

...BAPTIZING

them in the name of the Father and of the Son and of the Holy Spirit,



4

...and

TEACHING THEM

to obey everything I have commanded you. And surely I am with you always, to the very end of the age.””

““ How does God expect His followers to implement [the Great Commission]?
The obvious answer is:

BY PLANTING CHURCHES.

Church planting involves all the elements of fulfilling the Great Commission.

New churches are the result of Christians intentionally pursuing the lost, preaching the gospel, baptizing believers, and training them to live for Christ and make more disciples.

Dave Earley¹

